



News from the NaturaConnect project

**15th Carpathian Convention Implementation
Committee Meeting, online, 20-21 November 2024**

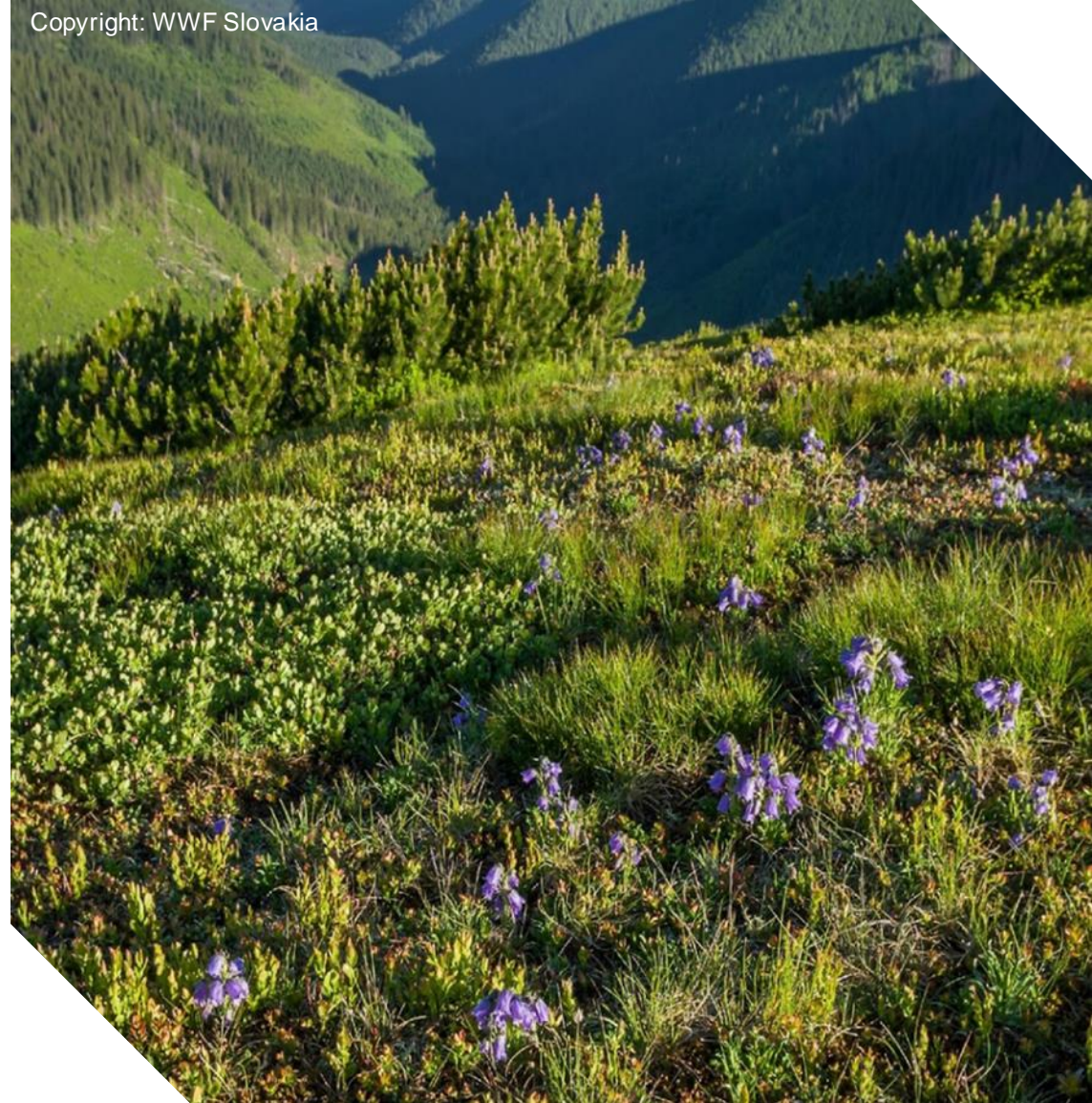
Hildegard Meyer, WWF Central and Eastern Europe

hmeyer@wwfcee.org



**Funded by
the European Union**

NaturaConnect receives funding under the European Union's Horizon Europe research and innovation programme under grant agreement number 101060429. The contents of this material are the sole responsibility of the NaturaConnect consortium and do not necessarily reflect the opinion of the European Union.



20 November 2024

Brief introduction to the project

Designing a resilient and coherent Trans-European Network for Nature and People

July 2022 – June 2026

NaturaConnect co-develops

knowledge, tools and capacity

to support **countries** realizing the objectives of the **EU Biodiversity Strategy 2030**.

- 30% of land and sea protected
- 10% thereof strictly
- Establish TEN-N



Copyright: WWF-CEE

Project consortium

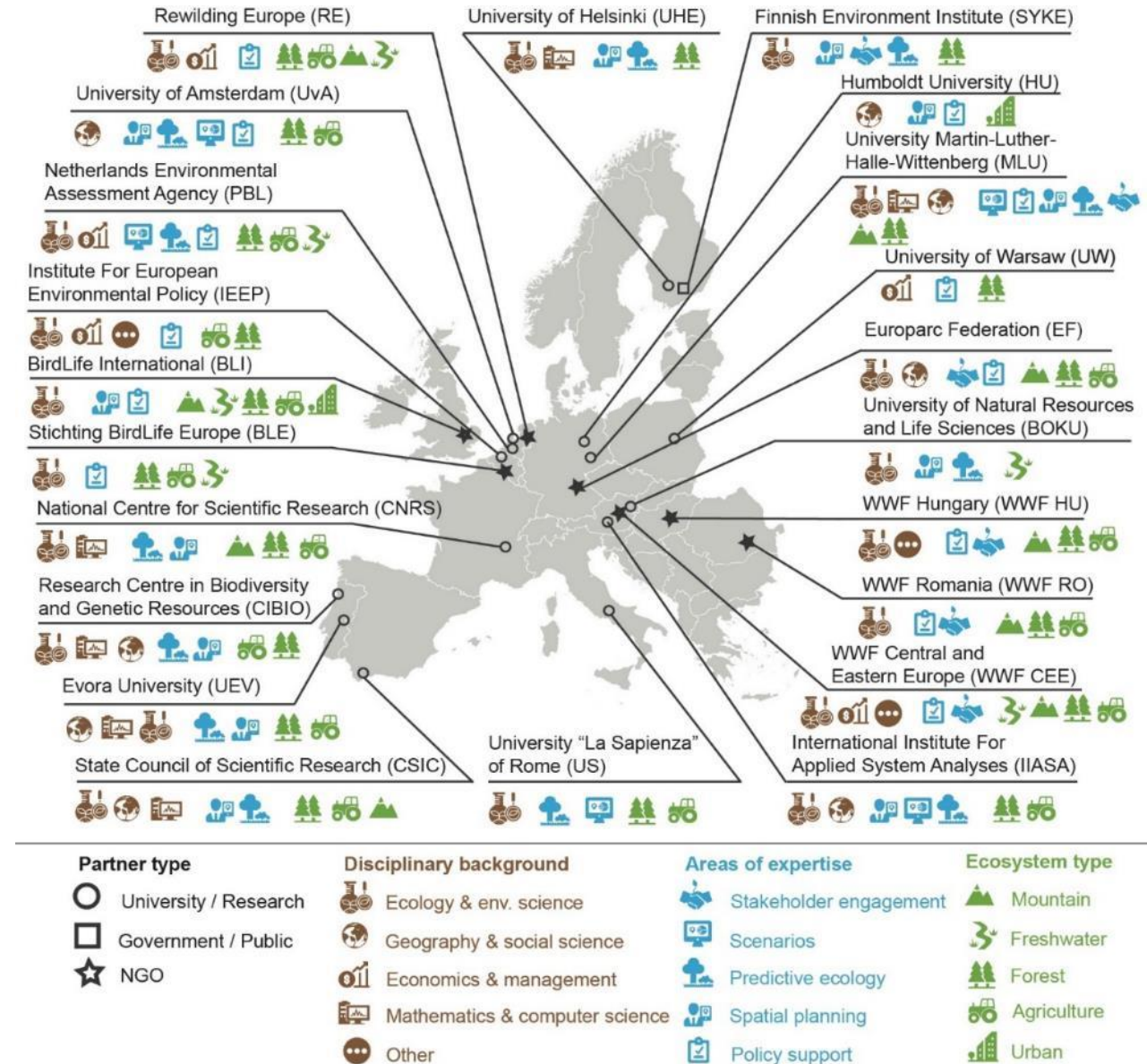
17 Research institutions

5 Policy and practitioner organisations

12 countries across Europe

Lead: International Institute for Applied System Analyses (IIASA), Austria

Co-lead: Martin-Luther-University, Germany



Source: IIASA, 2022

Case studies

International case study

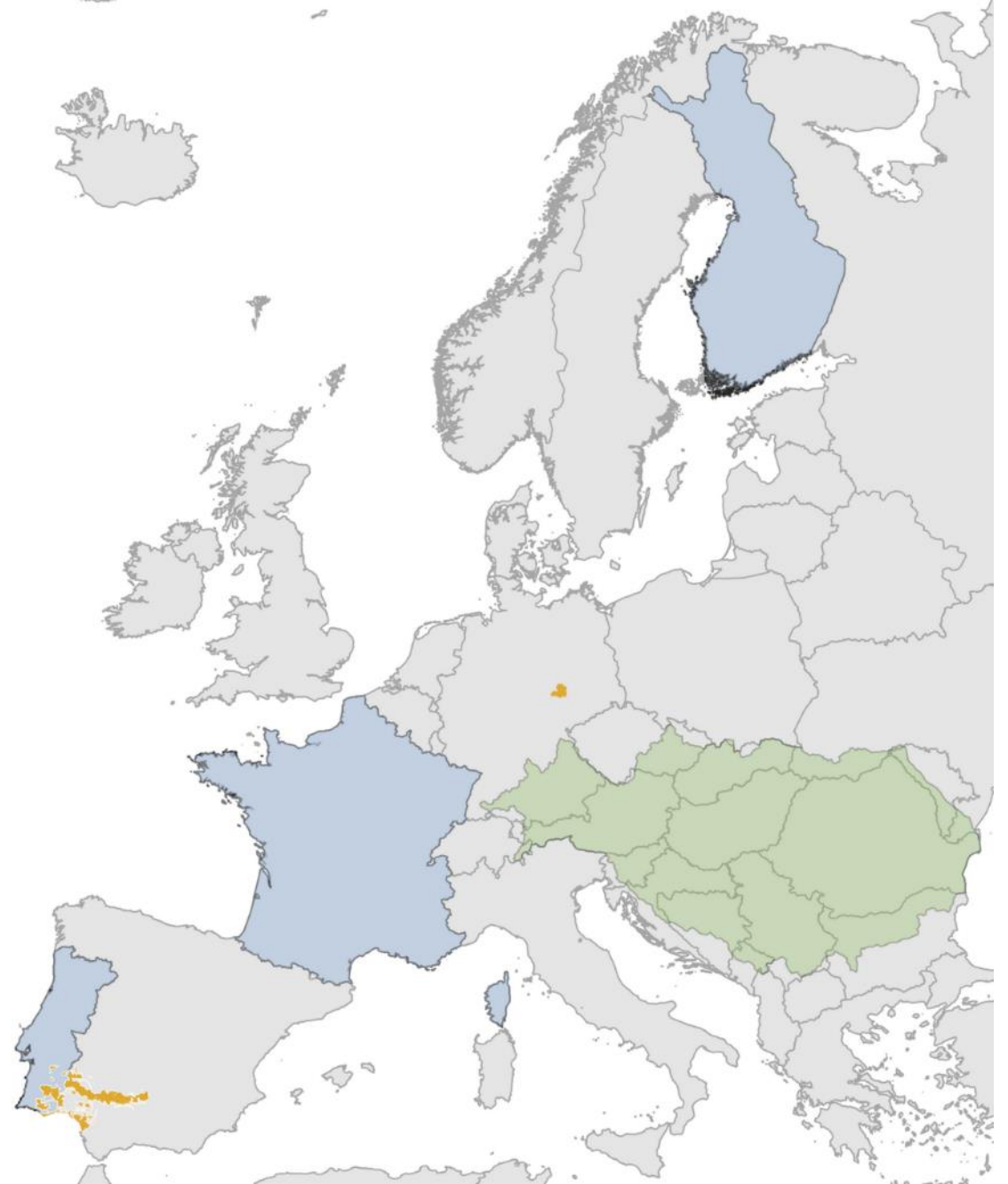
- Danube-Carpathian Transboundary Region

National case studies

- Finland
- France
- Portugal

Regional case studies

- The Doñana Region in Spain
- Leipzig-Halle Peri-urban Floodplains, Germany



Source: IIASA, 2022

Main activities in the Danube-Carpathian region

- Collaboration with the **Carpathian Convention**, the **ICPDR** and **EUSDR** on ecological connectivity aspects based on the Declaration & supported by the project
- **Stakeholder engagement** workshops, interviews, surveys for the development of project outputs
- **Scientific research** by BOKU in cooperation with other project partners
- **Capacity building**



Copyright: Rastislav Staník

Selected results up-to-date

Towards knowledge

- Review of PA and Ecological Connectivity Governance and Financing & Recommendations
- GIS Database across Europe

Towards tools

- Connectivity Guidelines & project database
- NaturaConnector drafted

Towards capacity building

- Competence Assessment
- NaturaConnect Learning Platform



Copyright: Hildegard Meyer, WWF-CEE

Brief introduction to results up-to-date

Review and synthesis of best practices in governance and land-use policies to implement TEN-N

D2.1 Review and synthesis of best practices in governance and land-use policies to implement TEN-N

This document reviews and synthesizes information on existing land-use planning and land management policy and guidance for GI management across countries and administrative levels. It compiles best practices which will be made available as a report in English and a selected number of languages for the 6 case studies.

Author(s): Joana Bores, Hildegard Meyer, Evelyn Underwood, Mila Sirychenko, Wouter Langhout, Peer von Döhren, Daniel Veríssimo, Balázs Horváth, Kenny Meganck, Alina Blaga, Måns Ingvarsson, Gabrielle Aubert, Barbara Herrero, Matea Osti, Anouk Puymartin

DOI: <https://doi.org/10.3897/arphapreprints.e139236>



Factsheets for funding opportunities

Public

- LIFE funding
- Interreg (European Territorial Cooperation) programme
- European Regional Development Funds & Cohesion Funds
- Common Agricultural Policy (CAP) funds
- European Maritime, Fisheries and Aquaculture funds (EMFAF)

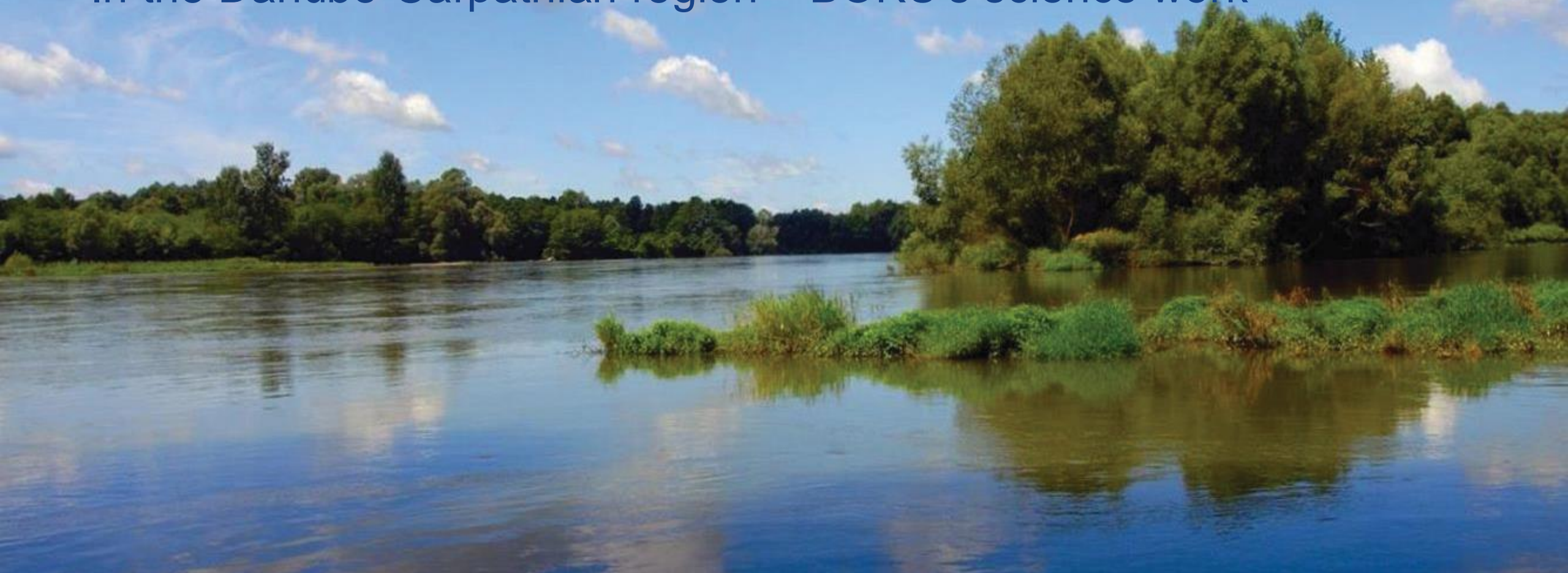
Private

- Users pay principle for protected areas
- Green bonds
- Resilience bonds
- Dept for nature swaps
- Aligning subsidies for nature
- Blended finance approaches

WILL SOON BE PUBLISHED ON THE WEBSITE!

Integrating blue and green infrastructure

In the Danube-Carpathian region – BOKU's science work



Guidelines for connectivity conservation and planning in Europe with supporting web based inventory and databases



D6.1 Guidelines for connectivity conservation and planning in Europe with supporting webbased inventory and databases

This report presents a coherent methodological framework and guidelines for mapping functional and structural connectivity at the European scale, as part of the Horizon Europe NaturaConnect project, which is supporting EU Member States in developing a coherent TEN-N of protected and conserved areas.

Author(s): Francisco Moreira, Filipe S. Dias, Jeremy Dertien, Ana Ceia Hasse, Luis Borda-de-Água, Silvia Carvalho, Miguel Porto, Francesca Cosentino, Luigi Maiorano, Andrea Sacchi, Luca Santini, Florian Borgwardt, Georg Gruber, Nikolaj Poulsen, Rafaela Schinegger, Carina Seliger, Néstor Fernández

DOI: <https://doi.org/10.3897/arphapreprints.e129021>

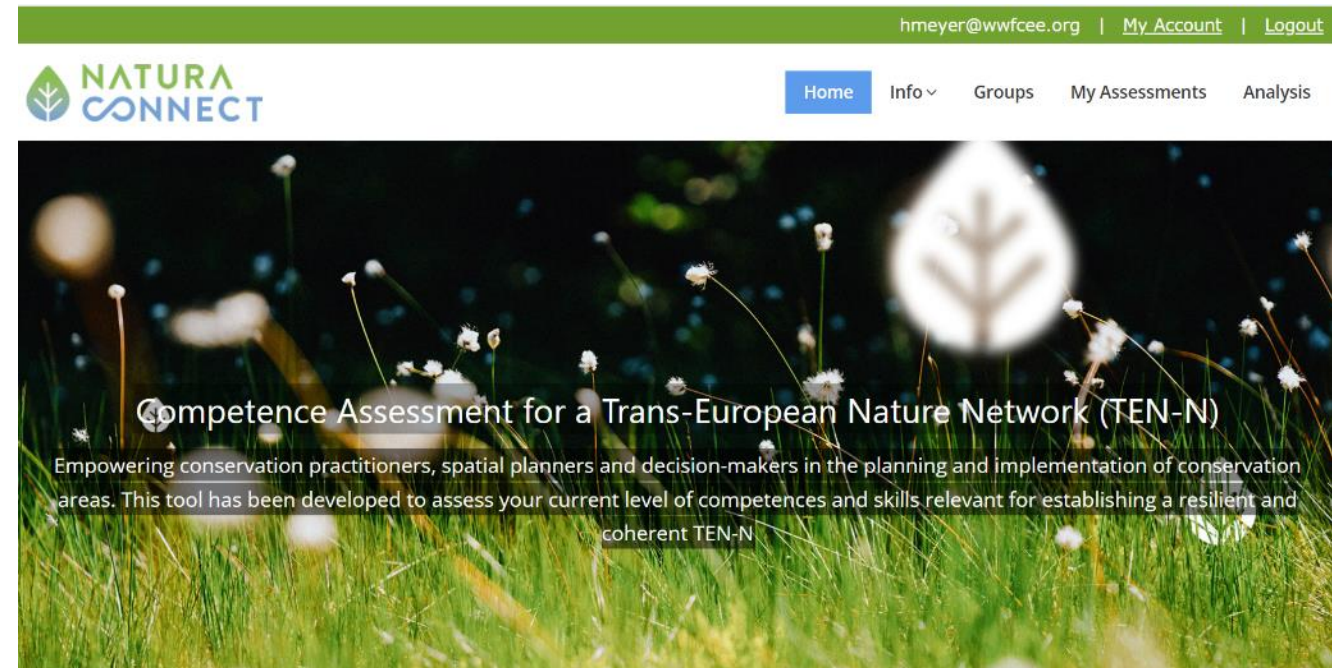
Project database: <https://naturaconnect.idiv.de/projects/>

Training Needs Assessment Tool

Purpose

Assess essential competences for connectivity and conservation planning

- Competence assessment based on the IUCN Global Register for Competences for Protected Area Practitioners
- Comprehensive self-assessment for biodiversity conservation managers, spatial planning technicians and data analysts (30-40 min)



Landing page of the Competence Assessment Tool

<https://conservation-cat.com/naturaconnect>

NaturaConnect Learning Platform

Target audience

Biodiversity conservation managers, spatial planning technicians and data analysts

Objectives

- Improve conservation planning
- Empower users to apply NaturaConnect outputs

Self-paced course with sequential and stand-alone modules, hosted by the [European Nature Academy](https://europeannatureacademy.com)



Start Courses Community About us Me

Continue

-  **NaturaConnect Training Course**
Organised in 3 sections with 11 modules.
-  **Section 1 - Concepts**
5 modules of background information.
-  **Section 2 - Governance**
2 modules of processes and instruments.
-  **Section 3 - Technical Tools**
4 modules of project outcomes.
-  **Project websites and platforms**
Links to external project resources.

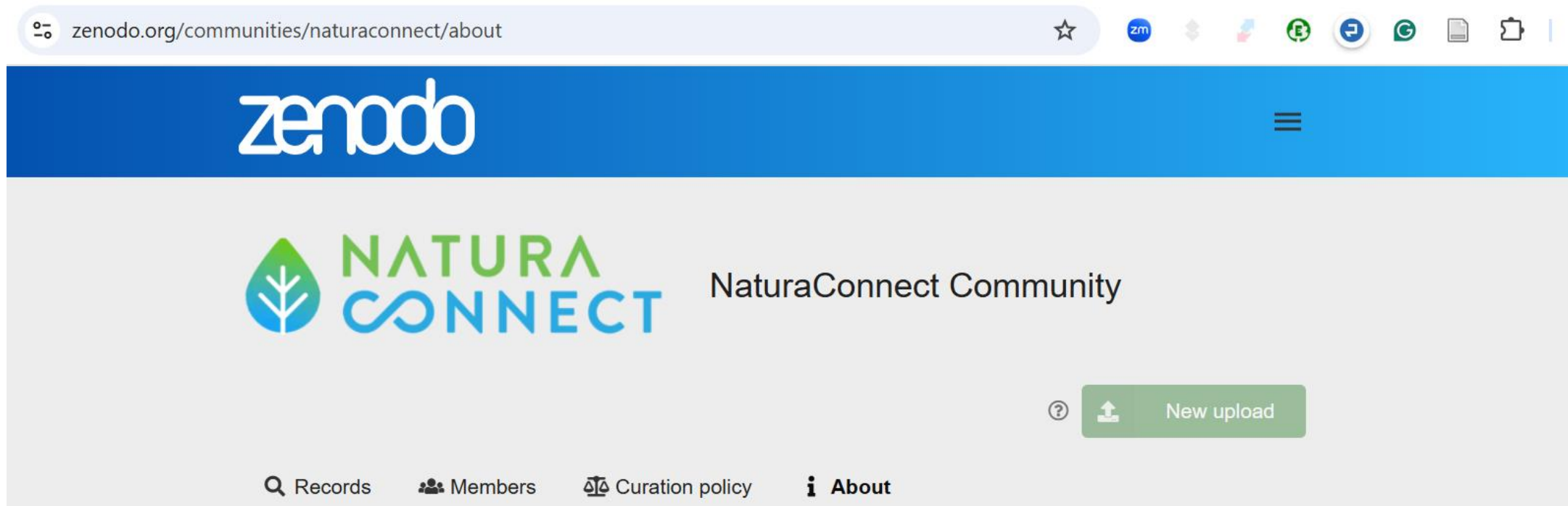


Landing page of the NaturaConnect Learning Platform

<https://europeannatureacademy.com/course/naturaconnect>

Open-access GIS Database across Europe

<https://zenodo.org/communities/naturaconnect>



The screenshot shows a web browser window with the address bar displaying `zenodo.org/communities/naturaconnect/about`. The Zenodo logo is visible in the top left of the page header. The main content area features the NaturaConnect logo, which consists of a stylized green leaf and the text "NATURA CONNECT". To the right of the logo, the text "NaturaConnect Community" is displayed. Below the logo and text, there is a green button with a question mark icon and the text "New upload". At the bottom of the page, there is a navigation menu with the following items: "Records" (with a magnifying glass icon), "Members" (with a group of people icon), "Curation policy" (with a scale icon), and "About" (with an information icon).

One example out of 12: [Metadatabase of available data on drivers, pressures, biodiversity, ecosystem services and conservation actions](#)

https://riojournal.com/topical_collection/247/

The screenshot displays the Rio Journal website interface. At the top, the browser address bar shows the URL https://riojournal.com/topical_collection/247/. The website header includes the PENSOFT logo, navigation links for 'About Pensoft', 'Books', 'Journals', 'News & Blog', and 'Contact', and user options for 'Register' and 'Login'. The main header features the 'RIO' logo with an elephant icon, a search bar with the placeholder 'Search this journal...', and a 'Submit manuscript' button. Below the header is a navigation menu with links for 'About', 'Articles', 'Topical collections', 'RIO Blog', 'Why Publish in RIO', 'Unique Features', 'Editorial Team', and 'Contacts'. The main content area is divided into two columns. The left column, titled 'In this collection', shows 'Papers published: 7' and 'Papers in press: 2', along with the 'NATURA CONNECT' logo and an 'OPEN ACCESS' badge. Below this is a 'Filter' section with a dropdown menu set to 'by Subject' and a search input field. The right column features the title 'Knowledge and Tools for the Trans-European Nature Network: Designing a Resilient and Connected System of Protected Areas in Europe' with a 'Sort by: Publication date newest' dropdown. The text below the title is edited by Néstor Fernández and Piero Visconti. The main text discusses the European Union's 2030 Biodiversity Strategy and the Trans-European Nature Network (TEN-N). The footer of the page shows the time '10:09'.

Ideas for engagement in 2025

Webinar/workshop series

Possible topics

- Possible ways of implementing recommendations derived from the Review
- Financing protected areas and ecological corridors
- Connectivity – technical workshop for planners (PPGIS Public Participation GIS)
- Climate change and land-use scenarios
- Map of integrated blue and green infrastructure in the Danube-Carpathian region
- Launch events for new modules at the Learning Platform



Connect with NaturaConnect!

 www.naturaconnect.eu

 naturaconnect@iiasa.ac.at

 facebook.com/NaturaConnectProject

 linkedin.com/company/naturaconnect/

 twitter.com/NaturaConnect



Scan the code to visit our website!